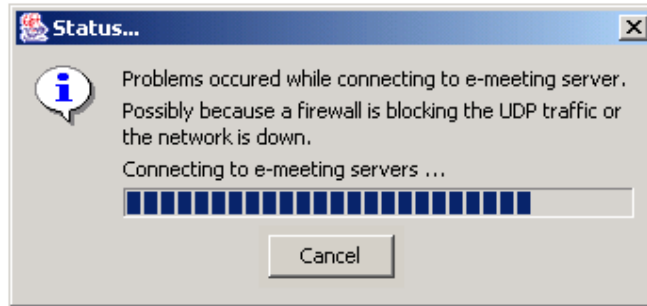


# Marratech Firewall Configuration

If you are attempting to connect to a Marratech virtual meeting room and you see the below error, it is possible that your firewall requires configuring to allow communication:



With many firewalls they will automatically prompt for you to 'Trust' or 'Allow' Marratech to connect to the internet. If this is the case please accept.

If you are located on a corporate network, or connect through a small router which includes a firewall, you will need to configure the relevant firewall rule to allow Marratech to connect. There are many firewalls available in these situations and therefore below is a summary of the server and ports which require configuring:

If you are attempting to connect to <http://us.emeeetingportal.com>:

Server IP: 64.247.16.200  
TCP Port: 80  
UDP Ports: 52000 – 52999

There are a number of ways to configure your firewall:

- The server IP can be configured as a trusted source at your firewall, which will allow traffic to pass freely between the client and server.
- The above ports can be configured to allow traffic to pass both ways.
- The above ports can be configured to a dynamic state, often called allow/return, this allows traffic initiated from within your network to pass both ways. If no connection is established from within your network then no traffic can be received on these ports.

It is worth noting that the Marratech server will always communicate with the client on the same ports, this feature allows the dynamic state rule; also that all Marratech traffic is 256bit encrypted which ensures a secure meeting.

If you have any questions or require support please email [support@marratech.com](mailto:support@marratech.com)

